

Inside this issue:

NCI Fact Sheets	2
Items of Interest	2-3
National Funding	4
National Events	5
Update for Partners	6
Regional Events	7
Contact Information	Last page

The National Cancer Institute's (NCI) Cancer Information Service (CIS) educates the public about cancer prevention, risk factors, symptoms, diagnosis, treatment, and research.

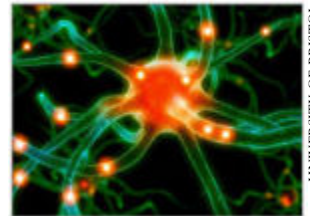
- CIS specialists provide the latest, most accurate information about cancer by telephone, TTY, instant messaging, and e-mail.
- The CIS operates the NCI's Smoking Quitline (1-877-44U-QUIT).
- Through its Partnership Program, the CIS works with established national, regional, and state organizations to reach those most in need of cancer information.
- The CIS takes part in health communications research to find new and better ways to educate people about health.

For information and publications, call 1-800-4-CANCER (1-800-422-6237) or visit <http://www.cancer.gov>.

NCI Press Releases & Information

Available at <http://www.cancer.gov/newscenter> or as otherwise noted.

- Hormone Cycling Found to Affect Gene Activity (8/16/09)
- Risk of Pancreatic Cancer Linked to Variation in Gene that Determines Blood Type (8/2/09)



Hormone signaling

UNIVERSITY OF BRISTOL

Clinical trials results:

Available at <http://www.cancer.gov/clinicaltrials/results-all> or as otherwise noted.

- Donated Stem Cell Transplants Better than Self-transplants for Most Patients with AML (acute myeloid leukemia) (7/23/09)
- For Children with Leukemia, Radiation May Be Unnecessary (7/23/09)
- Radiofrequency Ablation Effective Against Barrett Esophagus (7/23/09)

National Health Observances

This calendar comes from the National Health Information Center Web site: <http://www.healthfinder.gov/nho/nhoyear.asp?year=2009>.

September observances:

- Childhood Cancer Month
- Leukemia & Lymphoma Awareness Month
- National Mesothelioma Awareness Day (26th)
- Ovarian Cancer Awareness Month
- Prostate Cancer Awareness Month

Looking forward to October:

- Metastatic Breast Cancer Awareness Day (13th)
- National Breast Cancer Awareness Month

NCI Fact Sheet Collection

New, revised and reviewed titles, from <http://www.cancer.gov/cancertopics/factsheet>.

In English:

- Access to Investigational Drugs (FS 7.46, 8/4/09)
- Artificial Sweeteners and Cancer (FS 3.19, 8/5/09)
- Follow-up Care After Cancer Treatment (FS 7.48, 8/5/09)
- Care for Children and Adolescents With Cancer (FS 1.21, 5/19/09)
- Ordering National Cancer Institute Publications (FS 1.20, 7/24/09)
- Physical Activity and Cancer (FS 4.24, 7/22/09)
- Proteomics and Cancer (FS 5.38, 8/7/09)
- Targeted Cancer Therapies (FS 7.49, 7/29/09)

Deleted titles:

- *The NCI/FDA Proteomics Research Program, Its Research, and Diagnostic Tests by Private Industry (e.g., OvaCheckT)*
-

NCI Items of Interest

The President's Cancer Panel (PCP) is convening later this year for a series of four meetings. The theme of the 2009-2010 Panel is America's Demographic and Cultural Transformation: Implications for the Cancer Enterprise. The PCP is an advisory group established by Congress that reports directly to the President of the United States on progress and problems in the national effort to reduce the burden of cancer. The group consists of persons appointed by the President who, by virtue of their training, experience, and background, are exceptionally qualified to appraise the National Cancer Program. The meetings will be held in Seattle (September), Los Angeles (October), Wilmington, DE (December) and Miami (February 2010). Visit <http://deainfo.nci.nih.gov/advisory/pcp/agenda.htm> for the meeting agendas and information about the PCP.



NCI Publications and Items of Interest

Available at <https://cissecure.nci.nih.gov/ncipubs> or as otherwise noted.

- NCI Features: Toward Personalized Cancer Care (8/03/09)
<http://www.cancer.gov/features/personalizedcare2009>
 - Pregúntame de estudios clínicos (Ask Me About Clinical Trials) (available as a poster and a pin) (July 2009)
 - The Impact of Cigarette Smoking on HIV/AIDS: Urgent Need for Research and Cessation Treatment (Special Supplement to AIDS Education and Prevention) (June 2009)
-

Other Items of Interest

C-Change is pleased to announce the launch of a Web-based Cancer Competency toolkit providing methods, tools, and insights for strengthening the cancer knowledge and skills for non-oncology health professionals. Users can follow a step-by-step process for designing and implementing a competency-based program to meet the unique needs of their profession or organization. Users will gain free access to resources including the competency standards, examples from other organizations, and easily adaptable templates. Go to <http://www.cancercorecompetency.org/howto.php> as a starting point; there are also links to order the toolkit and all the other resources. Additionally, see this month's Funding Opportunities section – there is a grant opportunity available from this organization.



Other Items of Interest *(continued)*

The Agency for Healthcare Research and Quality (AHRQ) recently launched “Consejos de Salud Para Ti” (Health Advice for You), a new monthly online health advice column for Spanish-speaking consumers. The column provides evidence-based tips on preventive health, safe and appropriate use of medications and other medical therapies, ways to get better health care, and other key health care issues. The column is part of AHRQ’s *Información en Español* Web site, which has been enhanced and now includes audio and video in Spanish on a wide range of health care issues. For the press release announcing the new column, go to <http://www.ahrq.gov/news/press/pr2009/espcolpr.htm>. To review all the Spanish resources available on the *Información en Español* site, including this press release and others, link to <http://www.ahrq.gov/consumer/espanoix.htm>.

AHRQ has also recently released their annual, state-by-state report on the quality of care states provide, called State Snapshots. The Snapshots provide state-specific health care quality information, including strengths, weaknesses and opportunities for improvement. The state-level information used to create the State Snapshots is drawn from the 2008 National Healthcare Quality Report (released May 2009). See <http://statesnapshots.ahrq.gov/snaps08/index.jsp>



Press releases and publications of interest:

- FDA Launches New Center for Tobacco Products (8/19/09)
<http://www.fda.gov/NewsEvents/Newsroom/PressAnnouncements/ucm179410.htm>
- NIH Researchers Identify Key Factor that Stimulates Brain Cancer Cells to Spread (8/18/09)
<http://www.nih.gov/news/health/aug2009/ninds-18.htm>
- FDA Issues Final Rules to Help Patients Gain Access to Investigational Drugs (8/12/09)
<http://www.fda.gov/NewsEvents/Newsroom/PressAnnouncements/ucm176526.htm>
- Cancer Warnings Required for TNF Blockers (FDA) (8/4/09)
<http://www.fda.gov/NewsEvents/Newsroom/PressAnnouncements/ucm175803.htm>
- Cancer in Children (CDC) (7/30/09)
<http://www.cdc.gov/Features/dsCancerInChildren>
- Sun Exposure May Trigger Certain Autoimmune Diseases in Women (National Institute of Environmental Health Sciences, NIH) (7/30/09)
<http://www.nih.gov/news/health/jul2009/niehs-30.htm>
- Genetic Hunt Turns up Deafness-Causing Mutation in a Gene Associated with Cancer (National Institute on Deafness and Other Communication Disorders, NIH) (7/20/09)
http://www.nidcd.nih.gov/news/releases/09/07_20_09.htm
- Outcomes of Community Health Worker Interventions (AHRQ) (June 2009)
<http://www.ahrq.gov/clinic/tp/comhworktp.htm#Report>

National Funding Opportunities

C-Change Cancer Core Competency Initiative: Pain and Palliative Care Grants

Deadline: September 9, 2009



C-Change aims to equip non-oncology professionals with knowledge and skills to meet the needs of an aging and increasingly diverse population of people at risk for or living with cancer. Through a collaborative, multidisciplinary process, C-Change defined cancer competency standards and developed tools to apply them across a wide variety of health professions and care settings and conducted pilot phase testing. A multi-pronged national dissemination strategy has been launched to further the impact of this initiative. The C-Change Core Competency Pain and Palliative Care Grants will be awarded to stimulate adoption of the competency-based standards and tools to improve pain and palliative care knowledge, skills, and attitudes among non-oncology health professionals. Based on the tools and findings from these grant-funded sites, C-Change will develop resource materials and an experiential workshop for all State, Tribe, and Territory Comprehensive Cancer Control Coalitions in 2010. Grant applicants are sought from academic, health care, and professional institutions as well as comprehensive cancer control coalitions who have identified the need to improve cancer competency among a specific training or practicing health professional population. Background information and a link to the grant application (PDF document) are available at <http://www.cancercorecompetency.org>.

Ladder to Leadership Training Program

Dates for applications:

- Portland, OR: September 25–November 13, 2009
- Mid-South (Western TN., Eastern AR., Northern MS.): December 18, 2009–February 26, 2010
- New Jersey (Specific site/region to be determined): March 19–May 21, 2010
- Starr County, Texas: June 25–August 27, 2010



Ladder to Leadership: Developing the Next Generation of Community Health Leaders is a collaborative initiative of the Robert Wood Johnson Foundation (RWJF) and the Center for Creative Leadership. The initiative aims to enhance the leadership capacity of community-based nonprofit health organizations serving vulnerable populations. RWJF is committed to leadership development and improving the health of all Americans, particularly those in the most vulnerable communities – where people are often economically disadvantaged and have limited educational opportunities and inadequate access to health services.

The program will be delivered in selected priority communities on a staggered schedule (dates listed under the title, above). Each phase of the three-part curriculum includes a mixture of face-to-face training sessions, individualized executive coaching and mentoring, and team project work – all anchored within the context of the communities in which these leaders live and work to maximize the application and impact of the program concepts. Full details are available at <http://www.rwjf.org/applications/solicited/cfp.jsp?ID=20281>.

Community Participation in Research (R01) (PA-08-074)

Deadline: October 5, 2009

This Funding Opportunity Announcement (FOA) issued by the Office of Behavioral and Social Sciences Research (OBSSR), National Institutes of Health (NIH) solicits R01 grant applications that propose intervention research on health promotion, disease prevention, and health disparities that communities and researchers jointly conduct. For the purposes of this FOA, intervention research is quasi-experimental research projects that seek to influence preventive behaviors, treatment adherences, complementary behaviors, and related attitudes and beliefs. Natural experiments also may fall under the interventions rubric. Examples include, among many others, a community-led action plan for cancer, and reducing health disparities. This FOA will utilize the NIH Research Project Grant (R01) award mechanism. See full details at <http://grants.nih.gov/grants/guide/pa-files/PA-08-074.html>.

National Events of Interest



Health Information National Trends Survey (HINTS) Data Users Conference

September 24-25, 2009

Silver Spring, MD

<https://www.hintsmeeting.com>

National Health Policy Training Alliance for Communities of Color – Health Policy Journalism Institute: Covering Health Disparities

October 8-9, 2009

Las Vegas, NV

http://www.healthpolicyalliance.org/trainings/upcoming-trainings_events.html



International Cancer Education Conference – The Art and Science of Cancer Education and Evaluation

October 15-17, 2009

Houston, TX

<http://aace.cpsonline.info>

National Conference to End Health Disparities II

November 3-6, 2009

Winston-Salem, NC

<http://www.ccehd.com>



American Institute for Cancer Research Annual Research Conference on Food, Nutrition, Physical Activity and Cancer

November 5-6, 2009

Washington, DC

http://www.aicr.org/site/PageNavigator/Research/ResearchConference/res_conference_home

Society for Public Health Education (SOPHE) 60th Annual Conference

November 5-7, 2009

Philadelphia, PA

http://www.sophe.org/singlenews.asp?item_ID=13414



American Public Health Association (APHA) 137th Annual Meeting and Exposition – Water and Public Health

November 7-11, 2009

Philadelphia, PA

<http://www.apha.org/meetings>

Rural Multiracial and Multicultural Health Conference, National Rural Health Association - Blueprints for Success: Ideas for Change ~ *NEW*

December 9-11, 2009

Memphis, TN

<http://www.ruralhealthweb.org/go/left/programs-and-events/nrha-conferences/rural-minority-and-multicultural-health-conference>



Update for Partners

As you are aware, the National Cancer Institute's (NCI) Cancer Information Service (CIS) Partnership Program will end January 14, 2010. Since this announcement was made on October 1, 2008, and subsequent outcry from stakeholders (between October 2008 and May 2009, NCI received 146 letters and e-mail from the public and seven Congressional inquiries were made), NCI has been considering options for community engagement in its outreach and dissemination planning efforts.

Regional Partnership Program staff attended the final CIS National Meeting in Bethesda, Maryland at the end of July. Based on information received at that meeting from Dr. Sonya Springfield, director of NCI's Center to Reduce Cancer Health Disparities (CRCHD), and Lenora Johnson, director of NCI's Office of Communication and Education, the following is an update on information from NCI regarding their planned efforts in outreach.

Over the past few months, NCI has been working on a plan for developing a new NCI outreach and dissemination arm. As part of this plan, NCI had convened an Evidence Synthesis Panel, and was working on integrating the outcomes into a report to be presented to a panel of disparities, partnership, and cancer control experts. The next step in the process was to seek public input through a series of open forums in fall 2009 to gain an understanding of how to align research-based evidence with the cancer control and information needs of communities.

At this time, the NCI will not continue with the planning activities originally slated for fall 2009. As NCI was engaged in this concept development process, new opportunities emerged. NCI recently approved a "community outreach core" for the next funding period of the NCI's Community Networks Program (CNP) grants, to be known as CNP-II. In FY 2010, NCI will provide administrative supplements to the Minority Institutions/Cancer Center Partnership (MI/CCP), the Patient Navigation Research Program (PNRP), the Minority Based Community Clinical Oncology Program (MB-CCOP), the NCI Community Cancer Centers Program (NCCCP) pilot, and the NCI-designated Cancer Centers to further augment and reinforce this "National Outreach Network". This new core will provide one staff person to these NCI-funded programs for outreach, education, and dissemination that will help forge an outreach and dissemination network aligned with NCI research goals. This National Outreach Network will be coordinated by the NCI's CRCHD. NCI expects the transition to be expeditious, with a gap of only a few months between the end of the CIS Partnership Program in January 2010 and the award of the CNP-II grants in the spring of 2010 and subsequent similar alignments of outreach capacity in research program shortly thereafter.

NCI feels this approach will provide community support beyond 2010.

Community Networks Program (CNP)

<http://crchd.cancer.gov/cnp/background.html>

Minority Institutions/Cancer Center Partnership (MI/CCP)

<http://crchd.cancer.gov/research/miccp-overview.html>

Patient Navigation Research Program (PNRP)

<http://crchd.cancer.gov/pnp/pnpr-index.html>

Minority Based Community Clinical Oncology Program (MB-CCOP)

<http://dcp.cancer.gov/programs-resources/programs/ccop/about/contact>

NCI Community Cancer Centers Program (NCCCP) pilot

<http://ncccp.cancer.gov>

NCI-designated Cancer Centers

<http://cancercenters.cancer.gov>

Regional Events of Interest ~ Northwest Region

ALASKA

**17th Annual Care of the Elderly Conference –
Get Health: Promoting Health Literacy for Older Alaskans ~ NEW**
September 25-26, 2009

Harrigan Centennial Hall, Sitka

<http://www.uas.alaska.edu/sitka/coed/conferences/elderly.html>

**Save the Date: Alaska Cancer Survivorship Conference –
Rediscovering, Reclaiming and Renewing Life ~ NEW**

October 2, 2009

Providence Cancer Center, Anchorage

Julia Thorsness, julia.thorsness@alaska.gov or 907-269-8092



IDAHO

**North Idaho Cancer Coalition –
The 4T's of Colorectal and Prostate Cancers: Testing, Trials, Technology, Together ~ NEW**

October 9, 2009 12:30–5:30 PM

Kootenai Medical Center, Coeur D'Alene

<http://4ts.eventbrite.com>

OREGON

**Oregon Partnership for Cancer Control, Breast Health Task Force –
Strengthening Your Outreach through Cultural Competency ~ NEW**

September 9 and November 2, 2009 8 AM–12 noon

Portland State Office Building, 800 NE Oregon Street, Portland

TeriLynn.L.Dyrud@state.or.us or 971-673-1102

Living Well with Chronic Disease Workshops

(Various dates and counties through December 2009; see Web site for details)

Information and the link to the updated list of workshops (in PDF):

http://www.oregon.gov/DHS/ph/livingwell/le_workshop_info.shtml

WASHINGTON

Gilda's Club Lectures & Discussions ~ UPDATED



- September 10: Advanced Ovarian Cancer Treatment Options
- September 17: Lung Cancer: Latest Research
- September 24: Keeping Healthy After Cancer

Events: 6:45–8:30 PM, at Gilda's Club, 1400 Broadway at Union, Seattle
Free, open to the public (sign-up/RSVP required). 206-709-1400.

16th Annual Joint Conference on Health – Healthy People in Healthy Places: A New Path to Health

October 5-6, 2009

Yakima Convention Center, Yakima

<http://www.wspaha.org/JCH1.html>

The *CIS Connection* from the CIS Northwest Region provides you with the opportunity to share regional and state events and conferences of interest. If you have a conference or event you would like us to know about in our five-state region (Alaska, Idaho, Nevada, Oregon, and Washington), please call or e-mail the Partnership Program Manager, Kathy Briant, with details. (Contact information is on the last page.)

CIS Connection

Newsletter Editor: Pia Fish, Northwest Region

This edition produced by the Cancer Information Service, Northwest Region, which serves the states of Alaska, Idaho, Nevada, Oregon and Washington in cooperation with the Fred Hutchinson Cancer Research Center in Seattle, WA.

Northwest Region Staff

Nancy Zbaren - Program Director
206-667-6393 nzbaren@fhcrc.org

Kathy Briant - Partnership Program Manager
(covering NV, Western & Central WA)
206-667-1137 kbriant@fhcrc.org

Teresa Garrett Hill (formerly Guthrie)
Program Manager
Spirit of EAGLES Community Networks Program
206-667-7593 tguthrie@fhcrc.org

Heidi Harbach - Communications Specialist
206-667-7245 hharbach@fhcrc.org

Pia Fish - Program Support Specialist
206-667-5570 pfish@fhcrc.org

Partnership Program Coordinators

Alissa Green
(covering Western & Central OR)
971-673-2281 alissa.green@state.or.us

Stacy Kelley
(covering AK)
907-729-2927 sfkelley@anmc.org

Sharlynn Rima
(covering Eastern WA, Eastern OR and ID)
509-358-7813 srima@fhcrc.org

Cancer Information Service - Northwest Region
Fred Hutchinson Cancer Research Center
P.O. Box 19024, J2-400
Seattle, WA 98109-1024
Business Office Phone:
206-667-4675
Fax: 206-667-6097

We encourage your comments
and suggestions!
pfish@fhcrc.org
